

LUBRICATOR MODULE

TECHNICAL SPECIFICATIONS

MATERIALS OF CONSTRUCTION

Body: Glass reinforced nylon.

Bowls: Polycarbonate or Glass reinforced nylon.

Bowl Guard: Glass reinforced nylon.

Sight Cap: Transparent nylon.

Seals: Nitrile.

OPERATION CONDITIONS

Temperature Range: 0° to 125° F (-18° to 52°C).

Max. Inlet Air Pressure: Poly bowl - 200 p.s.i.g. (13.8 bar)
Nylon bowl - 150 p.s.i.g. (10.3 bar)

Application: Industrial compressed air systems.

Oil Capacity: 1.10 oz. (32.5 ml).

Flow: Air flow is at 90 p.s.i.g. (6.2 bar) inlet and 5 p.s.i.g. (0.3 bar) pressure drop.

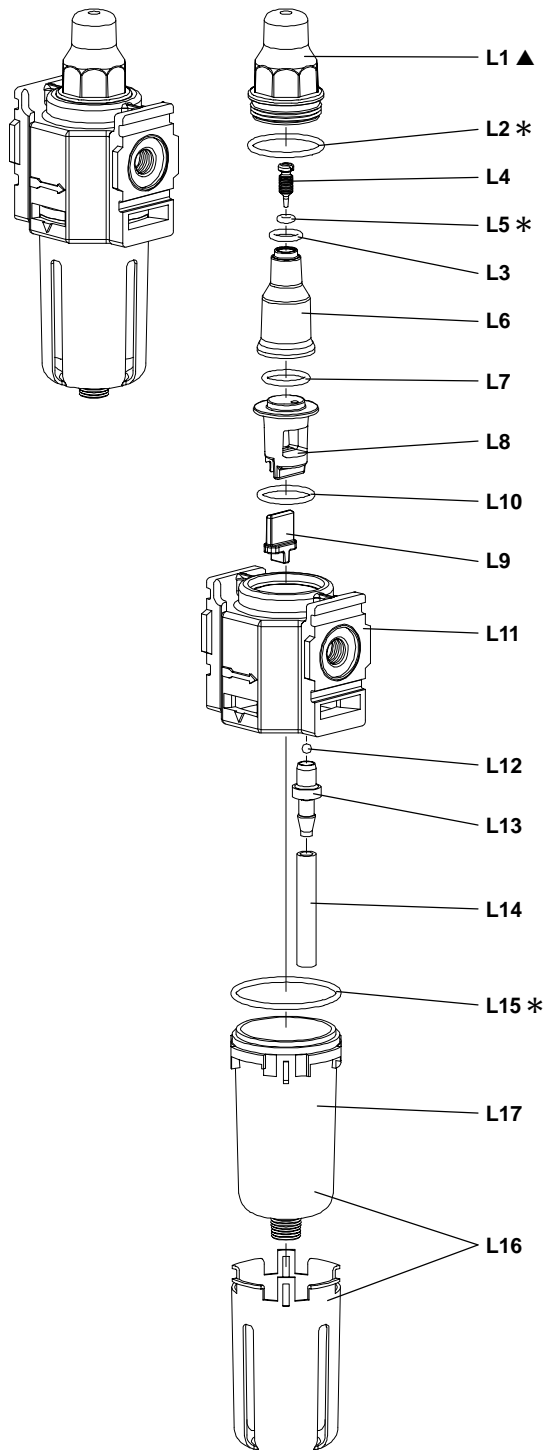
1/8" - 41 scfm (19 dm³/s)

1/4" - 60 scfm (28 dm³/s)

PARTS LIST

ITEM	DESCRIPTION (SIZE) [INCLUDES]	QTY	PART NO.
<input type="checkbox"/> L1	Sight Cap (outer) (torque to 20 - 30 in. lbs.)	(1)	100046
<input checked="" type="checkbox"/> L2	"O" Ring (1/16" x 1" o.d.)	(1)	Y325-20
<input checked="" type="checkbox"/> L3	"O" Ring (1/16" x 7/16" o.d.)	(1)	Y325-11
<input type="checkbox"/> L4	Adjustment Screw [L5]	(1)	104250
<input checked="" type="checkbox"/> L5	"O" Ring (1/16" x 7/32" o.d.)	(1)	Y325-5
<input type="checkbox"/> L6	Sight Cap (inner)	(1)	100047
<input checked="" type="checkbox"/> L7	"O" Ring (1/16" x 5/8" o.d.)	(1)	Y325-14
L8	Plate Assembly [L9]	(1)	104249
<input checked="" type="checkbox"/> L9	Compensating Valve	(1)	100050
<input checked="" type="checkbox"/> L10	"O" Ring (1/16" x 3/4" o.d.)	(1)	Y325-16
L11	Lubricator Base	(1)	N / A
L12	Ball (.1250" dia.)	(1)	Y16-204
L13	Tube Fitting	(1)	100052
L14	Tube (.170" i.d. x 1-1/2" long)	(1)	100063-2
<input checked="" type="checkbox"/> L15	"O" Ring (1/16" x 1-7/16" o.d.)	(1)	Y325-27
L16	Poly Bowl / Guard Assembly [L15]	(1)	104260
L17	Nylon Bowl [L15]	(1)	104261
<input checked="" type="checkbox"/>	Items included in Lubricator Repair Kit	(1)	104181
<input type="checkbox"/>	Items included in Lubricator Repair Kit	(1)	104226

Key-Lube® is a registered trademark of Key Industries.



▲ Torque to 20 - 30 in. lbs (2.3 - 3.4 Nm.)

* Lubricate with Key-Lube® upon assembly.

OPERATING AND SAFETY PRECAUTIONS

- Use only genuine ARO replacement parts to assure compatible pressure rating and performance.
- Read carefully all warnings and safety precautions and heed the following before operating, to avoid personal injury and / or property damage.
- Be certain anyone operating this equipment has been trained to use it safely.

⚠ WARNING COMPONENT RUPTURE. DO NOT EXCEED MAXIMUM RATED OPERATING PRESSURE OF: Polycarbonate Bowl - 200 p.s.i. (13.8 bar), Glass filled Nylon Bowl - 150 p.s.i. (10.3 bar). To avoid possible damage or personal injury, DO NOT expose the unit to excessive pressure beyond the intended working range.

⚠ WARNING TEMPERATURE LIMITS. DO NOT EXCEED MAXIMUM TEMPERATURE LIMITS OF 125° F (52° C). Excessive temperature can affect non-metallic parts which may weaken them and cause failure.

⚠ WARNING USE WITH INDUSTRIAL COMPRESSED AIR SYSTEMS ONLY. DO NOT USE WITH BOTTLED GAS PRODUCTS OR FLUIDS. MISAPPLICATIONS CAN RESULT IN COMPONENT FAILURE.

⚠ WARNING DISASSEMBLY HAZARD. DO NOT DISASSEMBLE THIS UNIT WHEN IT IS UNDER PRESSURE. SHUT OFF AND RELIEVE AIR SUPPLY BEFORE ATTEMPTING SERVICE OR DISASSEMBLY PROCEDURES.

Isolate the unit by closing the line valve or disconnect the supply line or hose.

⚠ WARNING BOWL REMOVAL HAZARD. THE BOWL MUST BE SECURELY LOCKED INTO POSITION BEFORE EXPOSING THE UNIT TO LINE PRESSURE. The bowls are designed with a feature which inhibits removal while under pressure. When reinstalling, push the bowl up into the body and rotate to the right 1/8 turn. Failure to lock the bowl could cause it to blow off, which could result in personal injury or property damage.

⚠ WARNING DO NOT USE DEGREASERS OR SOLVENTS TO CLEAN POLYCARBONATE BOWLS. Exposure internally or externally to incompatible chemicals or their vapors or fumes could attack and weaken polycarbonate material, causing failure.
DO NOT EXPOSE to acetone, trichloroethane, gasoline, alcohols, ketones, esters, chlorinated hydrocarbons, toluene, etc.
Clean polycarbonate bowls with soap and water or kerosene only. USE COMPATIBLE LUBRICATING OILS ONLY. Lubricating oils used in plastic bowls must be compatible with polycarbonate plastic (some "fire resistant" oil additives are not compatible). Fumes of these substances in contact with polycarbonate bowls internally or externally can also damage the bowl. Consult the chemical / oil manufacturer for compatibility and temperature limits. Refer to "Technical Specifications" on page 1 of this manual.

INSTALLATION

- Install lubricator with the air flow as indicated by the arrow on the unit.
- Install lubricator as close as possible to the air operated equipment for best performance.
- Lubricator must be installed with the bowl downward for proper operation.
- Locate the lubricator downstream from the regulator and filter.

OPERATION

- Use a good grade of non-detergent oil (ARO part # 29665) for use in the air operated equipment. Refer to the air operated

equipment operator's manual.

- Turn the adjustment screw counterclockwise to increase and clockwise to decrease.

LUBRICATOR ADJUSTMENT:

- NOTE: This is a siphon type lubricator design, adjustments need to be made with a constant rate of flow thru the lubricator in an operating mode.
- Use a small screwdriver to adjust the drip rate. The adjustment screw is located in the sight feed cap on the top of the lubricator.
 - Determine the average rate of flow (SCFM) thru the lubricator, then turn the adjustment screw to obtain one drop per minute for each 10 SCFM. Example: If the average flow is 20 SCFM, set the drip rate at 2 drops per minute.